



**BUYERS | SELLERS | BROKERS**

# COMPLETE DISPERSAL AUCTION

# SHINN & SON

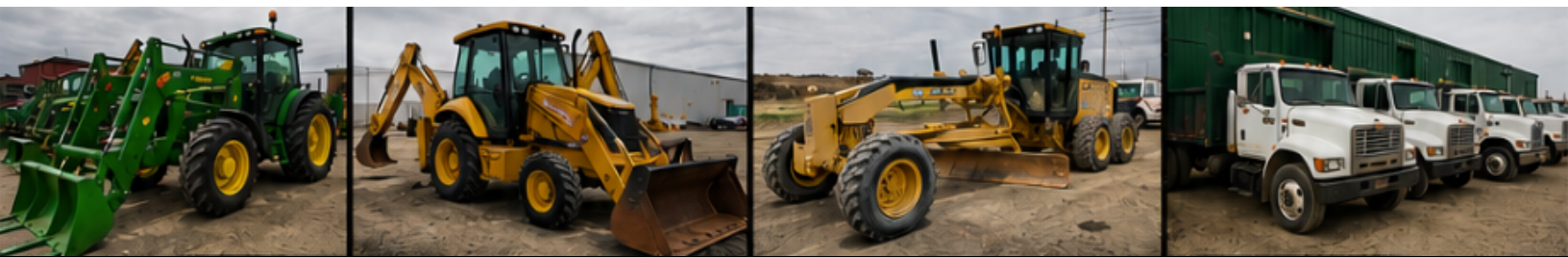
## FULL LINE OF WELL MAINTAINED FARM & CONSTRUCTION EQUIPMENT



# WEDNESDAY JULY 22<sup>ND</sup>, 2026

TOPPENISH, WA – Inspections by Appointment Only

**TRUCKS | TRACTORS | FORKLIFTS | IMPLEMENTS  
BACKHOES | GRADERS | LOADERS | AND MORE!**



### AGRICULTURAL TRACTORS & COMBINES

John Deere 2030–8335R series (2WD, 4WD, MFD wheel tractors); Case IH; JD 9870 STS combines; Case IH 2188 combine; corn heads, forage harvester & platform headers

### MEDIUM & HEAVY-DUTY TRUCKS

Ford F450/F550 flatbed, hop, fuel & utility trucks; International, Freightliner, Peterbilt, Mack & Ford L8000/L9000 work trucks; Ford Aeromax & International ProStar+ semi tractors; Kenworth & Volvo tractors

### CONSTRUCTION & MATERIAL HANDLING EQUIPMENT

John Deere backhoes, wheel loaders, excavators & motor grader; Bobcat skid steers; Gehl reach lifts & telescopic forklift; Toyota & Hyster forklifts; Genie/Skyjack lifts; Case wheel loader

### PICKUP & PASSENGER VEHICLES

Ford F150 pickups, Ford F250/F350 pickups, Ford E-350 passenger vans

### TRAILERS

Flatbed, end dump, bottom dump, silage chain drag, tank, equipment, hop harvest & walking floor trailers

### HOP & SPECIALTY FARMING EQUIPMENT

Rears airblast sprayers; JD sprayer/spreader; ridgers, discs, planters, mowers & tillage implements; hydraulic twining lifts; harvest forks; shade trailers; tank trailers; custom hop harvest equipment; skid steer & JD attachments

**For Full Sale Details: [www.thinkONYX.com](http://www.thinkONYX.com)**

Sale conducted by orders entered or to be entered by the Yakima County Superior Court in Case No. 26-2-00936-39

Sale in conjunction with: *Martella & Black*  
AUCTION CO.